

Visitation Information and Screening

Visitors must complete this form prior to each visit to DPCC. Thank you for helping keep the residents safe!

Please Print

Visitor Name: _____ Date: _____

Address: _____

City, State, Zip: _____

Phone Number: _____

Email Address: _____

Name Of Resident Visiting: _____

Has it been at least 14 days since your 2nd Vaccine Doses (1 Dose if J&J Vaccine?) Yes No

Unvaccinated Visitor: Have you traveled outside Illinois in the past 10 days? Yes No

Do you have any of the following:	Yes	No	Comments
Fever or chills?			
New or worsening cough?			
Shortness of breath or difficulty breathing			
Sore throat?			
Fatigue?			
Muscle or body aches?			
Headache (new, or not related to caffeine, hunger, tension, allergies)?			
New loss of taste or smell?			
Congestion or runny nose?			
Nausea, vomiting, or diarrhea?			
Have you had close contact with someone with COVID- 19 infection in the prior 14 days or met criteria for quarantine?			
Have you been diagnosed with COVID-19 in the prior 10 days?			

Visitation Information and Screening

Visitors must complete this form prior to each visit to DPCC. Thank you for helping keep the residents safe!

As a visitor of the DuPage Care Center (DPCC):

- I understand that by entering the facility I am at risk of exposure of SARS-CoV-2 (Covid-19).
- Regardless of my vaccination status, I will always wear my face mask properly when inside the facility, especially around other residents, staff members. I will physically distance from all staff and residents that I am not scheduled to visit with.



- I understand that I will only interact with the resident that I am scheduled to visit with. I will not leave the designated visit area or travel to another resident's room, neighborhood, nursing station or other part of the building.
- I have reviewed the attached information and understand that the IDPH Core Principles of Infection Prevention are part of the DPCC policy are in place to help keep risk of infection low.
- I understand that failure to comply with the DPCC policies can jeopardize the safety of the residents at the DuPage Care Center. The facility may ask me to leave if I am not able to comply with the current guidelines at this time.**
- I will notify the facility immediately if I develop any symptoms or test positive for COVID-19 or was exposed to someone within 3 Days of my visits. Please call 630-784-4240.

Signature of Visitor

Date

Visitation Information

Thank you for helping keep the residents safe!

IDPH Core Principles of Infection Prevention:



Vaccination



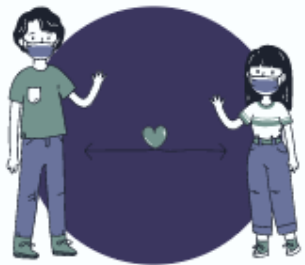
Hand Hygiene



**Face Covering/
Mask**



Screening



**Physical Distancing
Of 6 Feet**



Testing



**Cleaning &
Disinfecting**



Education



**Proper Use
of PPE**



Cohorting



**Outdoor Visits
are Preferred**

Please notify the facility immediately if you develop any symptoms or test positive for COVID-19 or are exposed to someone within 3 Days of your visit. Please call the main line 630-665-6400 ex. 0.

Visitation Information

Thank you for helping keep the residents safe!

KEY TIMES to Wash Your Hands



Before

- Eating or preparing food
- Touching your face



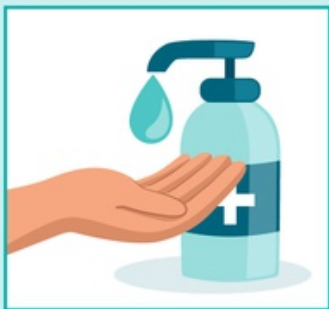
After

- Using the restroom
- Coughing or sneezing
- Leaving a public place
- Handling cloth face covering
- Changing a diaper
- Caring for someone sick
- Touching animals or pets

cdc.gov/coronavirus

CS317639-A 06/23/2020

HOW TO USE HAND SANITIZER



Apply the product on the palm of one hand



Rub hands together



Cover all surfaces, including the backs of hands, and fingernails



Rub until hands are dry.
Paper towels are not needed.

Answering Common Questions About COVID-19 Vaccines

Based on [recommendations](#) from the [Advisory Committee on Immunization Practices \(ACIP\)](#), an independent panel of medical and public health experts, the Centers for Disease Control and Prevention (CDC) recommends residents of long-term care facilities (LTCFs) be included among those offered the first supply of COVID-19 vaccines. Making sure LTCF residents can receive COVID-19 vaccination as soon as vaccine is available will help save the lives of those who are at the highest risk for infection and severe illness from COVID-19.

CDC has provided frequently asked questions and answers especially for LTCF residents and their families to help everyone understand the importance of COVID-19 vaccination. The information below is especially tailored to help answer questions before vaccination. [The CDC website](#) offers many other free tools in multiple languages to help answer common questions that are not specific to LTCF residents.

Q. Can residents and loved ones feel confident that COVID-19 vaccines are safe?

Yes. The safety of COVID-19 vaccines is a top priority. All of the vaccines that will be used have gone through the same safety tests and meet the same safety standards as other vaccines.

To help make important medical products, including vaccines, available quickly during the COVID-19 pandemic, the U.S Food and Drug Administration (FDA) can use what is known as an [Emergency Use Authorization \(EUA\)](#). For an [EUA](#) to be issued for a vaccine, for which there is adequate manufacturing information to ensure quality and consistency, FDA must determine that the known and potential benefits outweigh the known and potential risks of the vaccine.

The U.S. vaccine safety system monitors the safety of all vaccines, including COVID-19 vaccines, to ensure they are as safe as possible. As people begin receiving COVID-19 vaccinations, CDC and FDA will continue to

closely monitor vaccine safety. Learn more about [COVID-19 vaccine safety monitoring](#).

Q. Do the benefits of vaccination outweigh the possible risks?

After a review of all the available information, ACIP and CDC agreed that the lifesaving benefits of vaccinating LTCF residents against COVID-19 outweigh the possible risks. COVID-19 vaccines that are being delivered to LTCFs were tested in large studies that included adults age 65 and older. The study results showed that the vaccines were safe and provided protection from COVID-19 in these older adults.

Q. What are the possible side effects?

The most common side effect is pain at the injection site, and some individuals experience symptoms like fever and chills. These side effects tend to be mild to moderate and go away quickly. These side effects are signs that the immune system is doing exactly what it is supposed to do. It is working and building up protection against the disease. Serious side effects after vaccination were very rare.



Q. Will residents still need to wear masks after receiving COVID-19 vaccine?

Yes. COVID-19 vaccines will be an important tool to help stop the pandemic. However, everyone, including LTCF staff and residents, should continue to follow all current guidance, including facility policies on visitation, to protect themselves and others. Stopping a pandemic requires using all the tools available. Vaccines work with your immune system so your body will be ready to fight the virus if you are exposed. Other steps, like covering your nose and mouth with a [mask](#) and [staying at least 6 feet away from others](#), help reduce your chance of being exposed to the virus or [spreading it to others](#). Together, COVID-19 vaccination and following CDC's recommendations to [protect yourself and others](#) will offer the best protection from COVID-19.

Q. Will residents have to get two shots to be protected from COVID-19?

Yes. All people who receive COVID-19 vaccine should get two shots. The first shot starts building protection, but people need a second shot a few weeks later to get the most protection the vaccine can offer.

Q. How do residents and their loved ones report possible side effects?

It is important to notify your healthcare provider if you are experiencing side effects after COVID-19 vaccination. CDC is also working with pharmacies and other partners to report possible side effects (called "adverse events") to the [Vaccine Adverse Event Reporting System \(VAERS\)](#). Facility residents and their loved ones are encouraged to report any adverse events immediately.

CDC has also developed a smartphone tool called [v-safe](#). Facility residents with smartphones have the option to use this tool to tell CDC if they have any side effects after getting a COVID-19 vaccine. If residents report serious side effects, someone from CDC will call to follow up.



Q. Can residents' family members and loved ones receive COVID-19 vaccine through the Pharmacy Partnership Program for Long-Term Care?

No. On-site clinics through the Pharmacy Partnership Program will vaccinate residents and staff of LTCFs. Residents' families or loved ones are not eligible for this program.

Q. Will cost be a barrier to receiving COVID-19 vaccine?

No. There is no cost associated with COVID-19 vaccine for recipients. Vaccination providers will be able to charge an administration fee for giving the vaccine, but this fee will be reimbursed by the patient's public or private health insurance or, for uninsured patients, by the Health Resources and Services Administration's Provider Relief Fund.