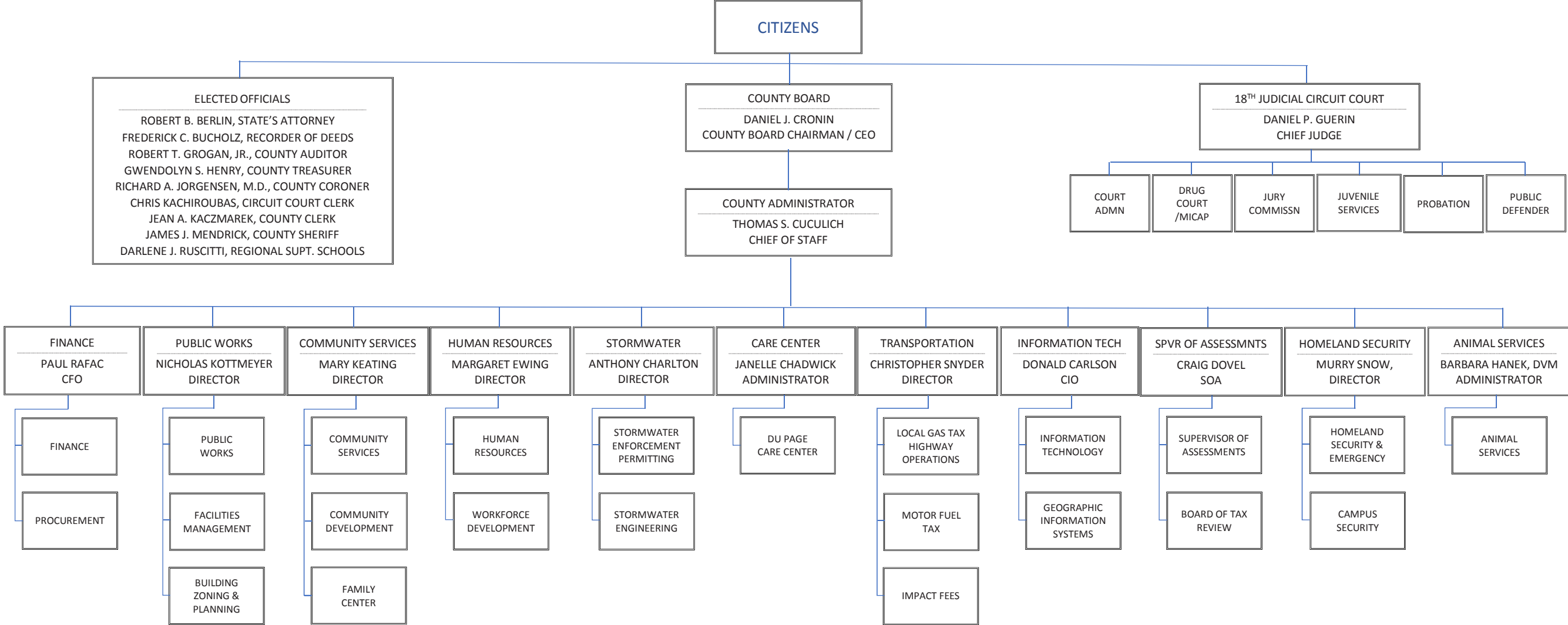


DuPage County, Illinois

Organizational Summary



Other DuPage County Agencies: Choose DuPage, Emergency Telephone System Board (ETSB), Forest Preserve, Health Department, Veterans Assistance Commission, and Veterans Memorial.

Departments under the jurisdiction of the County Board report administratively to the County Board Chairman, who functions as the Chief Executive Officer. Departments under County-wide Elected Officials report administratively to those officials. County-wide Elected Officials include: Sheriff, Coroner, Circuit Court Clerk, State's Attorney, Regional Superintendent of Schools, Recorder of Deeds, Treasurer, Auditor, and County Clerk. The Election Division is under the authority of the County Clerk. The Chief Judge controls various court services including: Court Administration, Drug Court / MICAP, Jury Commission, Juvenile Services, Probation, and Public Defender.